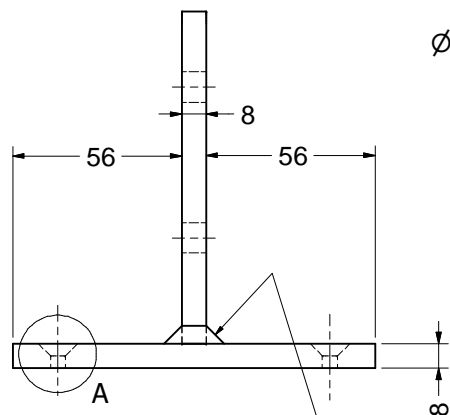
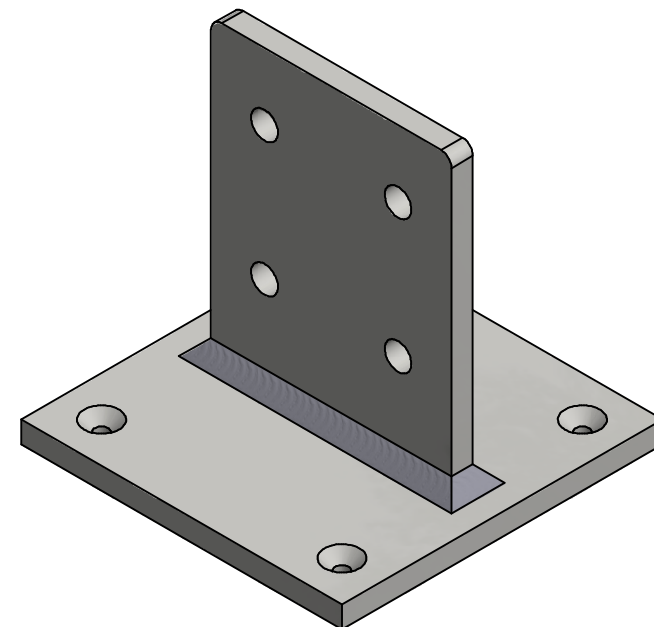
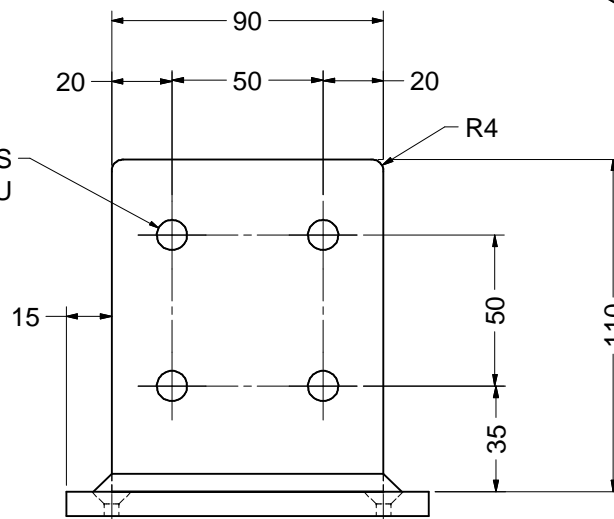


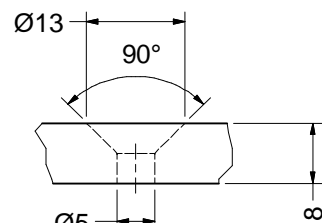
4 HOLES $\varnothing 5.0$ THRU
 $\checkmark \varnothing 13.0 \times 90.0^\circ$



4 HOLES
 $\varnothing 10.0$ THRU



6 X 6 CONTINUOUS FILLET



DETAIL A
4 POSITIONS

SEE SHEET 2 FOR TYPICAL FIXING METHOD

MASS = 1.5 Kg

TITLE POST TOP FIXING BRACKET

Canopy Products Ltd

Blackwood Mill
Blackwood Road
Bacup OL13 0PZ
Tel 01706 82 2665
www.canopyproducts.co.uk

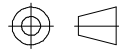
MATERIAL GR 304 STAINLESS STEEL
TREATMENT

SCALE NTS DRN RSD DATE 13-Nov-19

DRG. No.

PTBSS-2





CROSS PIECE

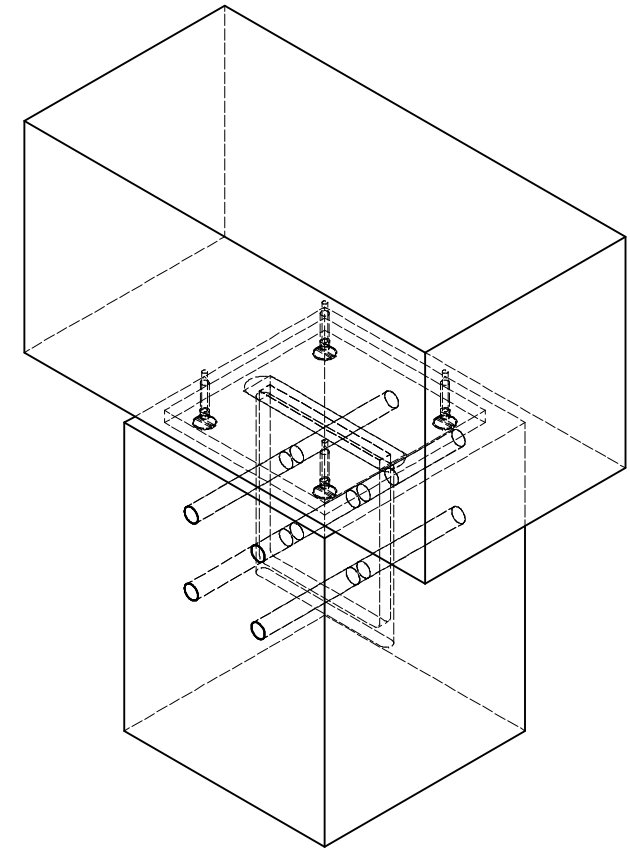
PTBSS-2

SLOT 8 WIDE X 100 LONG
X 120MM DEEP. CHAMFER
UPPER EDGE TO CLEAR
WELD ON PTBSS-2 BRACKET

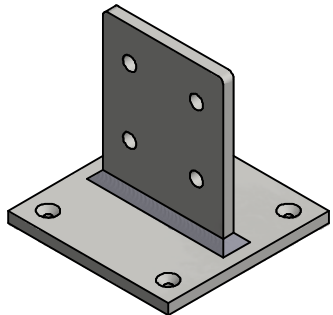
WOODSCREW

DIA 10 DOWELS

POST



TYPICAL FIXING METHOD



TITLE POST TOP FIXING BRACKET

Canopy Products Ltd

Blackwood Mill
Blackwood Road
Bacup OL13 0PZ
Tel 01706 82 2665
www.canopyproducts.co.uk

GR 304 STAINLESS STEEL

SCALE NTS	DRN RSD	DATE 13-Nov-19
--------------	------------	-------------------

DRG. No.

PTBSS-2

